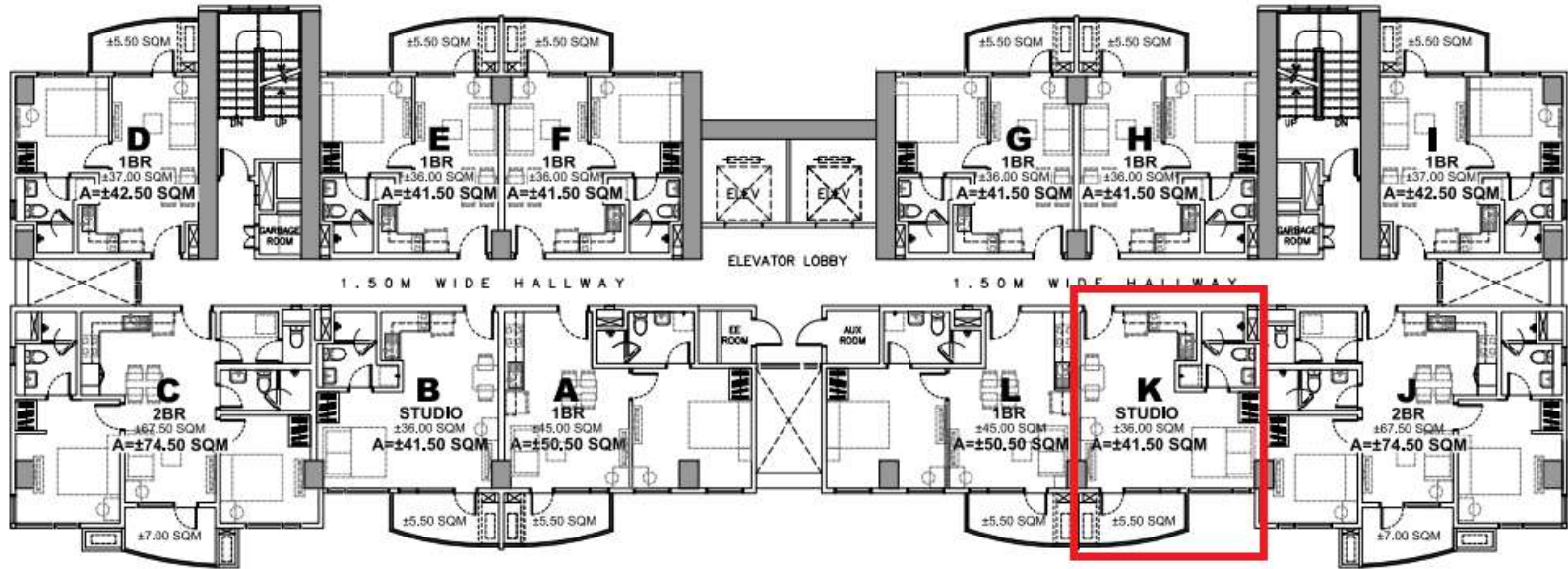




AMENITY AREA/MAGELLAN BAY / NORTHERN CEBU TOWN

HILUTUNGAN CHANNEL /  
OLANGO ISLAND



MAGELLAN BAY /  
NORTHERN CEBU TOWN

CEBU SEA

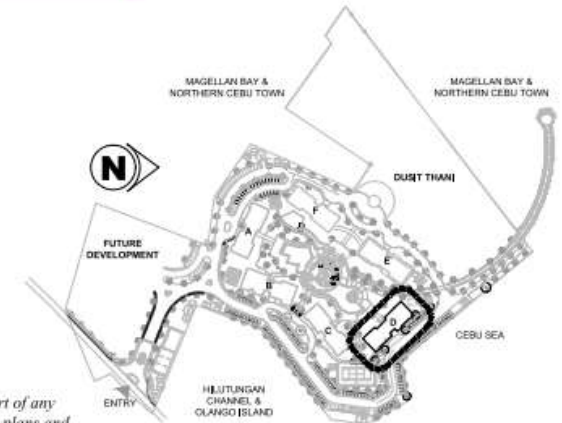


TOWER - D  
TYPICAL 3RD - 15TH FLOOR PLAN  
NOT TO SCALE

PRIVATE RESIDENCES  
MACTAN, CEBU

While every care has been taken in preparing this material, all plans, details and specifications contained herein are subject to change without prior notice and do not constitute part of any offer or contract. No warranty or representation is made by the Developer as to their accuracy. Furthermore, the Developer reserves the right to alter, deviate or dispense with the plans and specifications referred to herein to comply with certain building requirements such as but not limited to structural, mechanical, electrical, sanitary and plumbing requirements. In the event of alteration or deviation with the plans and specifications referred to herein, the Developer shall be rendered free and harmless from any liability arising therefrom. Furniture, appliances and equipment indicated herein are for illustrative purpose only and are not included in the deliverables.

Some views may currently be unobstructed. However, the Developer does not guarantee unobstructed views due to possible future developments in the neighboring lots. All drawings are not to scale.

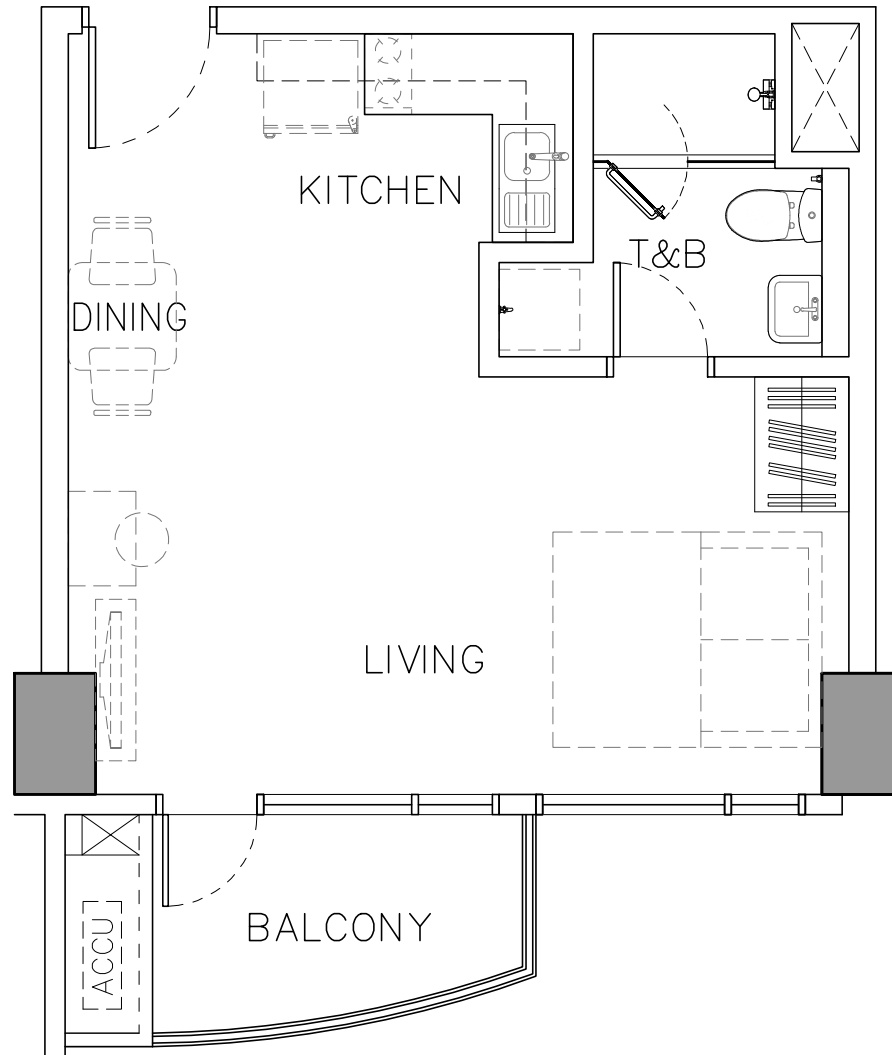


SITE DEVELOPMENT PLAN

ROBINSONS LAND CORPORATION  
DATE ISSUED: JANUARY 7, 2022

DR: VAM/AMISA/001\_001\_001/AMISA\_T/AMENITY AREA/MAGELLAN BAY / NORTHERN CEBU TOWN / TYPICAL 3RD - 15TH FLOOR PLAN / 14.09.2022

DP: Rem: RLC: 2021\_NEW\_DEVT: AMISA D:\MARKETING COLLATERAL\CAD\2022 01 19\_AMISA-D\_MARKETING COLLATERALS.dwg 21.09.2021



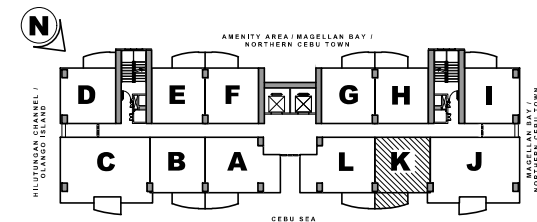
UNIT AREA = ±36.00 SQM  
 BALCONY AREA = ±5.50 SQM  
 TOTAL AREA = ±41.50 SQM



**TOWER - D**  
**UNIT K (STUDIO WITH BALCONY)**  
 TYPICAL 3RD - 15TH FLOOR PLAN

While every care has been taken in preparing this material, all plans, details and specifications contained herein are subject to change without prior notice and do not constitute part of any offer or contract. No warranty or representation is made by the Developer as to their accuracy. Furthermore, the Developer reserves the right to alter, deviate or dispense with the plans and specifications referred to herein to comply with certain building requirements such as but not limited to structural, mechanical, electrical, sanitary and plumbing requirements. In the event of alteration or deviation with the plans and specifications referred to herein, the Developer shall be rendered free and harmless from any liability arising therefrom. Furniture, appliances and equipment indicated herein are for illustrative purposes only and are not included in the deliverables.

Some views may currently be unobstructed. However, the Developer does not guarantee unobstructed views due to possible future developments in the neighboring lots. All drawings are not to scale.



**KEY PLAN**

*[Signature]*  
**ROBINSONS LAND CORPORATION**  
 DATE ISSUED: JANUARY 7, 2022



Unit Type **Studio**  
 Unit Number **11K**  
 Area (sqm) **41.50 sqm.**  
 Unit Price **P 9,883,285.00**

**Investment Overview 1-Feb-2024**

**STANDARD TERMS**

**OPTION 1: Cash Payment (99% in 30 Days)**

	Total
<b>Price</b>	<b>₱9,883,285.00</b>
Less: 14.00% Payment Scheme Discount	-₱1,383,659.90
Less: 0.00% Event Discount (if applicable)	₱0.00
Less: 0.00% Loyalty Discount (if applicable)	₱0.00
Less: 0.00% Bulk Discount (if applicable)	₱0.00
Less: 5.00% Special Discount (if applicable)	-₱494,164.25
Less: 0.00% Other Discount	₱0.00
<b>Net Unit Price</b>	<b>₱8,005,460.85</b>
<b>Reservation Fee</b>	<b>₱40,000.00</b>
<b>Cash payment due in 30 days after reservation</b>	<b>₱7,885,406.24</b>
<b>1% Retention</b>	<b>₱80,054.61</b>
<b>6% Closing Fee</b>	<b>₱480,327.65</b>

**OPTION 2: 100% in 61 Months**

	Total
<b>Price</b>	<b>₱9,883,285.00</b>
Less: 11.00% Payment Scheme Discount	-₱1,087,161.35
Less: 0.00% Event Discount (if applicable)	₱0.00
Less: 0.00% Loyalty Discount (if applicable)	₱0.00
Less: 0.00% Bulk Discount (if applicable)	₱0.00
Less: 5.00% Special Discount (if applicable)	-₱494,164.25
Less: 0.00% Other Discount	₱0.00
<b>Net Unit Price</b>	<b>₱8,301,959.40</b>
<b>Reservation Fee</b>	<b>₱40,000.00</b>
<b>Monthly Amortization in 61 months</b>	<b>₱135,441.96</b>
<b>6% Closing Fees</b>	<b>₱498,117.56</b>

**OPTION 3: 20% DP; 20% in 59 Months**

	Total
<b>Price</b>	<b>₱9,883,285.00</b>
Less: 5.50% Payment Scheme Discount	-₱543,580.68
Less: 0.00% Event Discount (if applicable)	₱0.00
Less: 0.00% Loyalty Discount (if applicable)	₱0.00
Less: 0.00% Bulk Discount (if applicable)	₱0.00
Less: 5.00% Special Discount (if applicable)	-₱494,164.25
Less: 0.00% Other Discount	₱0.00
<b>Net Unit Price</b>	<b>₱8,845,540.08</b>
<b>Reservation Fee</b>	<b>₱40,000.00</b>
<b>20% Downpayment</b>	<b>₱1,729,108.02</b>
<b>20% Monthly Amortization in 59 months</b>	<b>₱29,984.88</b>
<b>60% Retention</b>	<b>₱5,307,324.05</b>
<b>6% Closing Fees</b>	<b>₱530,732.40</b>

**OPTION 4: 20% in 60 Months**

	Total
<b>Price</b>	<b>₱9,883,285.00</b>
Less: 0.00% Event Discount (if applicable)	₱0.00
Less: 0.00% Loyalty Discount (if applicable)	₱0.00
Less: 0.00% Bulk Discount (if applicable)	₱0.00
Less: 5.00% Special Discount (if applicable)	-₱494,164.25
Less: 0.00% Other Discount	₱0.00
<b>Net Unit Price</b>	<b>₱9,389,120.75</b>
<b>Reservation Fee</b>	<b>₱40,000.00</b>
<b>20% Monthly Amortization in 60 months</b>	<b>₱30,630.40</b>
<b>80% Retention</b>	<b>₱7,511,296.60</b>
<b>6% Closing Fees</b>	<b>₱563,347.25</b>

**NOTES:**

- This sample computation is not official and is for presentation purposes only.
- Refer to the project Pricelist and Payment Scheme memo for further details.
- For any discrepancies between this sample computation and that of the official pricelist and payment scheme, the Developer reserves the right to correct any errors appearing herein at anytime including, but not limited to, the 6% closing fees are net of unit contract price.
- Price, availability of unit and parking slot and other details appearing herein are subject to change without prior notice.
- The Developer reserves the right to correct any errors appearing herein at anytime including, but not limited to, the 6% closing fees are net of unit contract price.
- The 6% closing fees are net of unit contract price.
- The client must submit the following to book the unit:
  - Photocopy of valid ID
  - Reservation check payable to Robinsons Land Corporation
  - Signed and accomplished Buyer's Information Sheet
  - Signed and accomplished Reservation Agreement
  - Other documents Operations Department may require