

LINCOLN

AT IPI CENTER



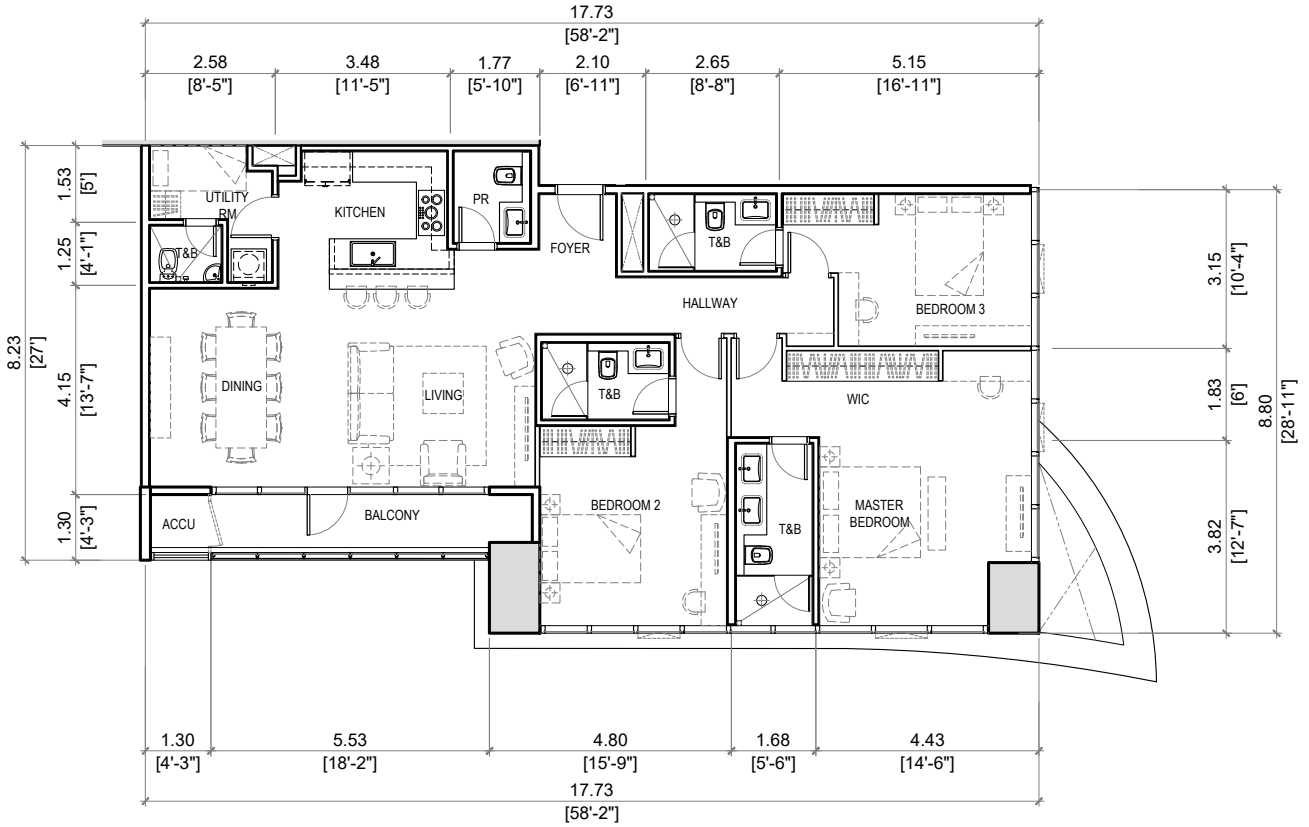
TYPICAL FLOORS (3RD-49TH)

UNIT TYPE	UNIT SIZE (SQM)	NO. OF UNITS
		PER FLOOR
STUDIO	33 - 35	4
1BR	39 - 65	4
2BR	104	3
3BR	154	1

The above information and drawings are conceptual and subject to change without prior notice. The Developer reserves the right to make additions, deletions and modifications to the drawings as the Developer may deem appropriate or desirable. August 2023.

LINCOLN

AT IPI CENTER



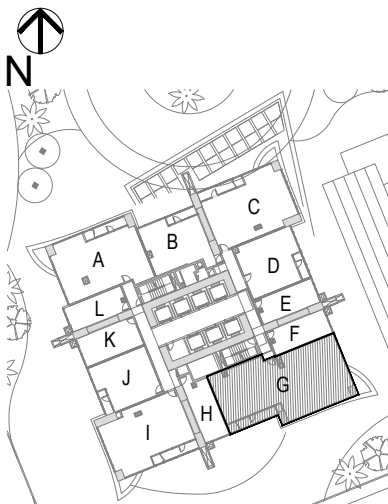
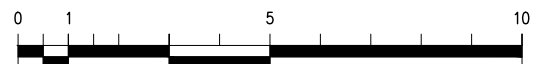
AREAS:

FOYER	4 sm
LIVING / DINING / HALLWAY	41 sm
KITCHEN	10 sm
POWDER ROOM	4 sm
MASTER BEDROOM	29 sm
MBR T&B	7 sm
BEDROOM 2	19 sm
BEDROOM 2 T&B	4 sm
BEDROOM 3	15 sm
BEDROOM 3 T&B	4 sm
UTILITY ROOM	5 sm
UTILITY T&B	2 sm
ACCU	2 sm
BALCONY	8 sm

TOTAL : 154 sm

LEVEL : 2 - 49

UNIT TYPE : **UNIT G**
3-BEDROOM



KEYPLAN
LEVEL 2ND - 49TH

The above information and drawings are conceptual and subject to change without prior notice. The Developer reserves the right to make additions, deletions and modifications to the drawings as the Developer may deem appropriate or desirable. August 2023.

LINCOLN

AT IPI CENTER

Unit Number :	LINC-12G
Turnover:	April 2029
Tower:	Lincoln Tower
Orientation:	South-East
Area:	154 sq.m / 1,658 sq. ft

Unit Price with VAT with (2) Parking Slots	PHP	48,591,400
Less: 3% Intro Discount		<u>1,457,742</u>
TOTAL CONTRACT PRICE	PHP	47,133,658

PAYMENT TERM: 10-30(66)-60
Three Bedroom Unit

Original Payment Term Proposed

Reservation Fee	PHP	100,000	To hold the Unit
10% Down Payment		4,613,366	First monthly within 15 days from RF
OPTION 1 (Straight Amortization):			
30% Monthly Amortization for 66 months		214,244	First monthly within 15 days from DP
OPTION 2 (Amortization with Lumpsum every 12 months):			
15% Monthly Amortization for 66 months		107,122	First Monthly within 15 days from DP
15% Lumpsum on Month 12, 24, 36, 48, 60		1,414,010	every 12 months
60% Balance		<u>28,280,195</u>	on March 2029
Total Purchase Price	PHP	47,133,658	

Prepared on August10,2023

* RLC reserves the right to change above terms and prices without prior notice

* Other taxes and fees for the account of the Purchaser

* All checks payable to ROCKWELL IPI DEVELOPMENT CORPORATION