

LINCOLN

AT IPI CENTER



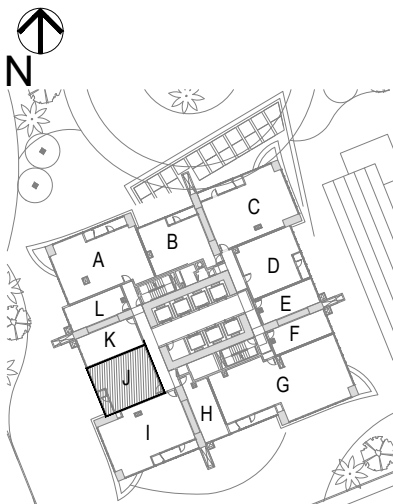
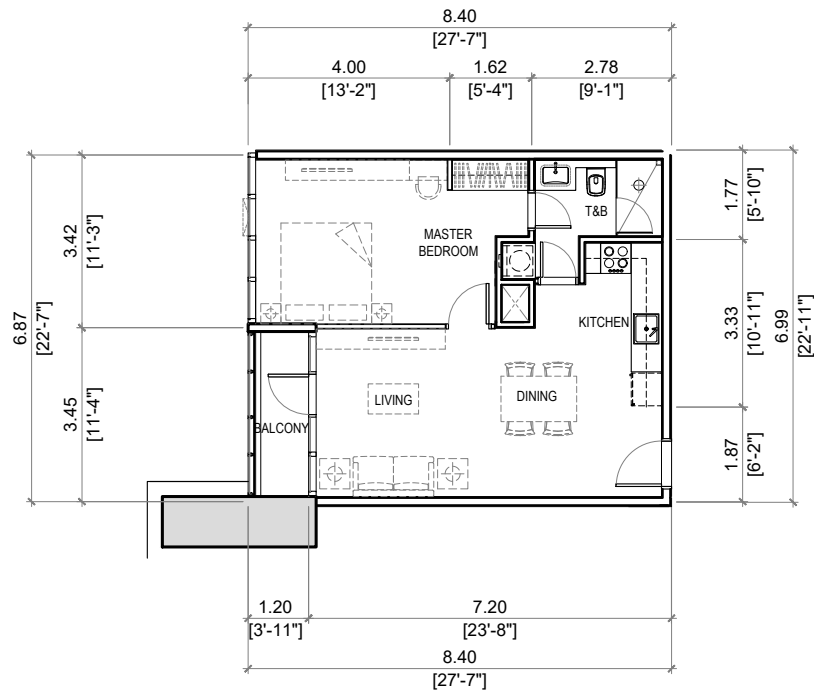
TYPICAL FLOORS (3RD-49TH)

UNIT TYPE	UNIT SIZE (SQM)	NO. OF UNITS
		PER FLOOR
STUDIO	33 - 35	4
1BR	39 - 65	4
2BR	104	3
3BR	154	1

The above information and drawings are conceptual and subject to change without prior notice. The Developer reserves the right to make additions, deletions and modifications to the drawings as the Developer may deem appropriate or desirable. August 2023.

LINCOLN

AT IPI CENTER



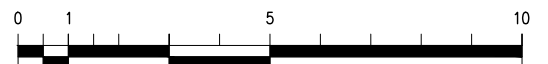
AREAS:

LIVING / DINING	24 sm
KITCHEN	6 sm
MASTER BEDROOM	19 sm
T&B	5 sm
BALCONY	4 sm

TOTAL : 58 sm

LEVEL : 2 - 49

UNIT TYPE : **UNIT J**
1-BEDROOM



The above information and drawings are conceptual and subject to change without prior notice. The Developer reserves the right to make additions, deletions and modifications to the drawings as the Developer may deem appropriate or desirable.
August 2023.

LINCOLN

AT IPI CENTER

Unit Number :	LINC-35J	
Turnover:	March 2029	
Tower:	Lincoln Tower	
Orientation:	South-West	
Area:	58 sq.m /624 sq. ft	
Unit Price with VAT with (1) Parking Slot	PHP	20,065,000
<i>Less: 3% Intro Discount</i>		<u>601,950</u>
TOTAL CONTRACT PRICE	PHP	19,463,050

PAYMENT TERM: 10-30(66)-60
One Bedroom Unit

Monthly Amortization at 0% Interest

Reservation Fee	PHP	100,000	To hold the Unit
10% Downpayment		1,846,305	Within 15 days from RF
OPTION 1 (Straight Amortization)			
30% Monthly Amortization for 66 months		88,468	First monthly within 15 days from RF
OPTION 2 (Amortization with Lumpsum every 12 months)			
20% Monthly Amortization for 66 months		57,464	First Monthly within 15 days from RF
20% Lumpsum on Month 12,24,36,48,60		778,522	every 12 months
60% Balance		<u>11,677,830</u>	March 2029
Total Purchase Price	PHP	19,463,050	

- * Prepared on August 12, 2023
- * RLC reserves the right to change above terms and prices without prior notice
- * Other taxes and fees for the account of the Purchaser
- * All checks payable to ROCKWELL LAND CORPORATION