

LINCOLN

AT IPI CENTER



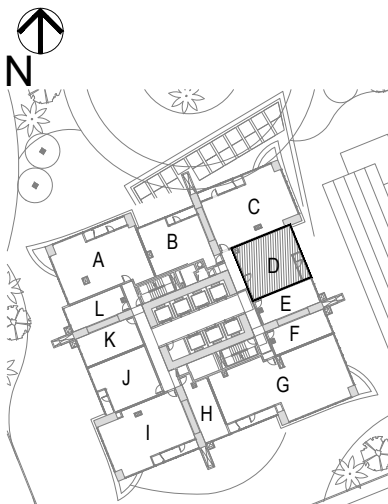
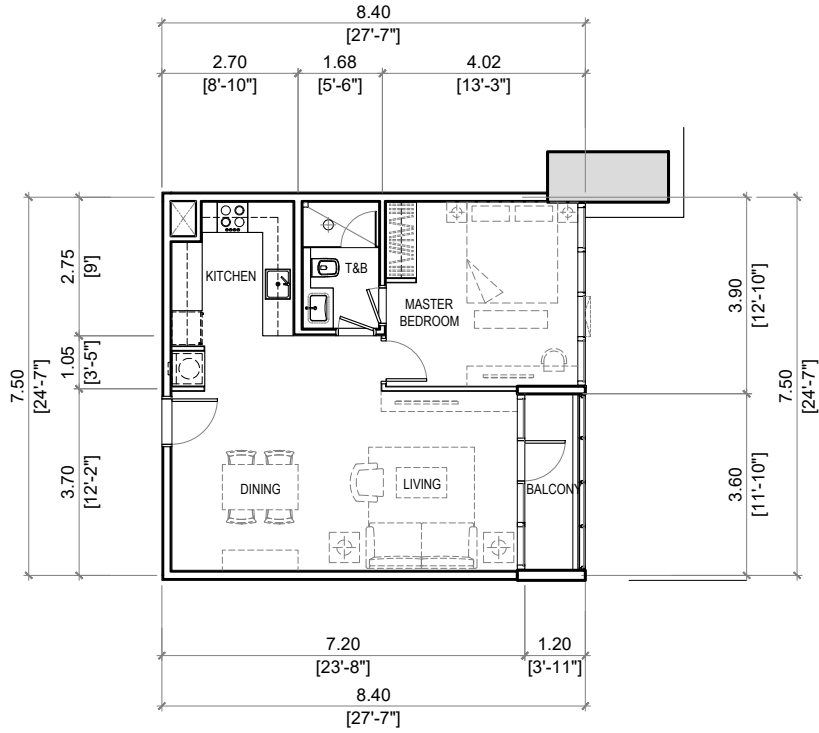
TYPICAL FLOORS (3RD-49TH)

UNIT TYPE	UNIT SIZE (SQM)	NO. OF UNITS
		PER FLOOR
STUDIO	33 - 35	4
1BR	39 - 65	4
2BR	104	3
3BR	154	1

The above information and drawings are conceptual and subject to change without prior notice. The Developer reserves the right to make additions, deletions and modifications to the drawings as the Developer may deem appropriate or desirable. August 2023.

LINCOLN

AT IPI CENTER



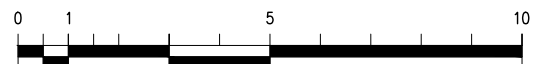
AREAS:

LIVING / DINING	31 sm
KITCHEN	8 sm
MASTER BEDROOM	15 sm
T&B	5 sm
BALCONY	4 sm

TOTAL : 63 sm

LEVEL : 2 - 49

UNIT TYPE : **UNIT D**
1-BEDROOM



LINCOLN

AT IPI CENTER

Unit Number :	LINC-5D	
Turnover:	April 2029	
Tower:	Lincoln Tower	
Orientation:	North-East	
Area:	63 sq.m / 678 sq. ft	
Unit Price with VAT w/ (1) Parking	PHP	19,894,800
Less: 3% Intro Discount		596,844
TOTAL CONTRACT PRICE	PHP	19,297,956

PAYMENT TERM: 10-30(66)-60
One Bedroom Unit

Original Payment Term Proposed

Reservation Fee	PHP	100,000	To hold the Unit
10% Down Payment		1,829,796	First monthly within 15 days from RF
OPTION 1 (Straight Amortization):			
30% Monthly Amortization for 66 months		87,718	First monthly within 15 days from DP
OPTION 2 (Amortization with Lumpsum every 12 months):			
15% Monthly Amortization for 66 months		43,859	First Monthly within 15 days from DP
15% Lumpsum on Month 12, 24, 36, 48, 60		578,939	every 12 months
60% Balance		<u>11,578,774</u>	on March 2029
Total Purchase Price	PHP	19,297,956	

Prepared on August10,2023

* RLC reserves the right to change above terms and prices without prior notice

* Other taxes and fees for the account of the Purchaser

* All checks payable to ROCKWELL IPI DEVELOPMENT CORPORATION